

### ULTIME D MF 800-50 WHE 1S Brick

#### Dimensions (mm)

- combustion opening WxH: 836 x 506
- external WxDxH: 1011 x 620 x 1819
- fresh air intake: 2 x Ø150
- flue gas outlet: Ø250

#### Technical Data

- ecolabel: A
- capacity: 18.2kW
- efficiency: 82.3%
- CO (volume with 13%O<sub>2</sub>): 0.08%
- dust (volume with 13%O<sub>2</sub>): 26mg/Nm<sup>3</sup>
- weight: 350kg
- convection air inlet: min.700cm<sup>2</sup> (4 x Ø150)
- convection air outlet: min.700cm<sup>2</sup> (4 x Ø150)

Min 1725 - Max 1819

Min 249 - Max 343

1011

836

506

A

405

200

896

Fresh air inlet (2xØ150)

155

Min 1613 - Max 1819

308.5

SECTION A-A

506

620

310

Ø 250

Ø 150

69

88

69

Space for Bricks:  
Metalfire+ takes no responsibility  
for materials used and  
for quality of Brickwork

286

358

131

First aid and technical support:

- support@metalfire.eu
- +32 9 261 51 90

scale 1:20

www.metalfire.eu EN 13229

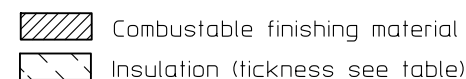
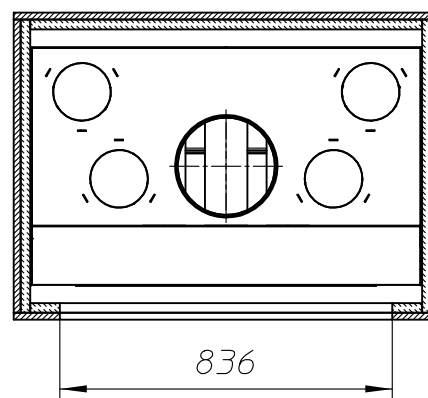
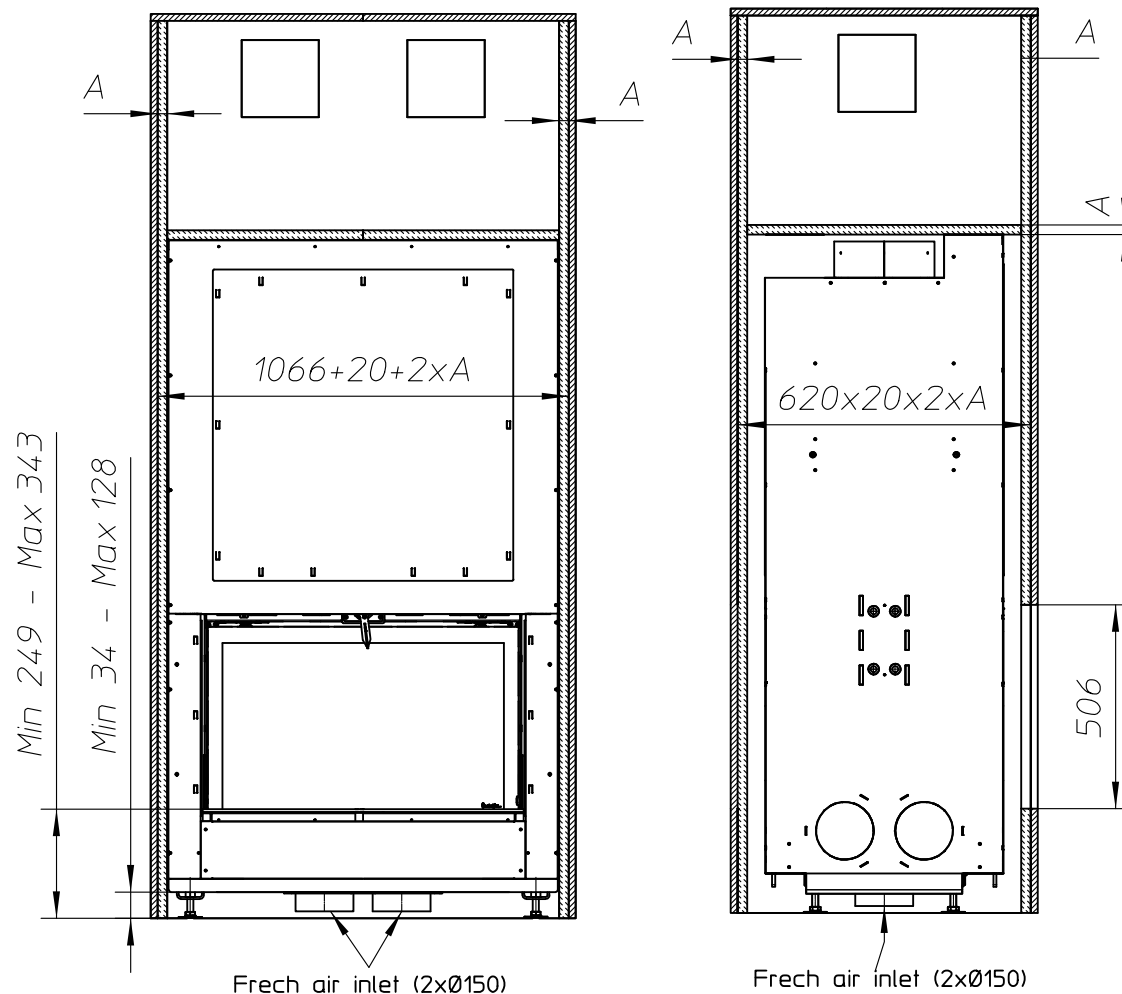
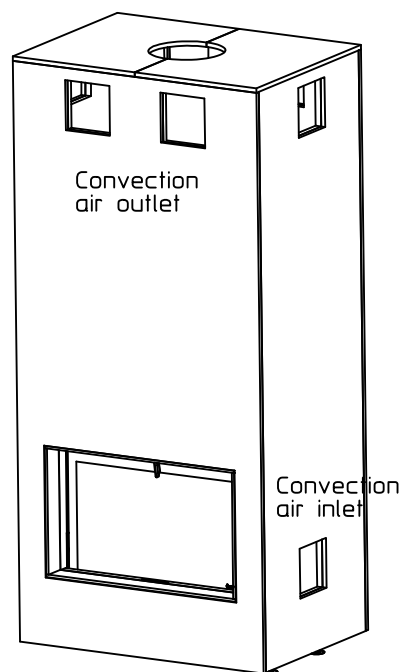
General dimensional tolerances up to 6mm  
Metalfire preserves the right to modify specifications without previous notice

Rev.  
A

CE

Sheet  
1/5

Without finishing frame



ULTIME D Patented

*Metalfire*

## Technical Document

ULTIME D MF 800-50 WHE 1S BRICK

Prescribed insulation thickness (mm)

Combustable finishing material

Metalfire recommended  
SILCA T 300  
(TC = 0,09 W/mK)

A = 25mm

Non-combustable finishing material

non-combustable  
materials  
structural building items  
EXCLUDED e.g. load bearing walls

A = 0mm

TC = thermal conductivity

NC = non-combustable

First aid and technical support:

- support@metalfire.eu

- +32 9 261 51 90

scale 1:20

Rev.  
A

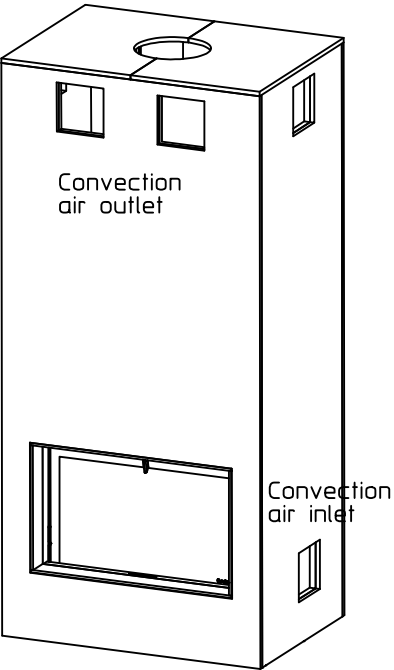
www.metalfire.eu EN 13229

CE

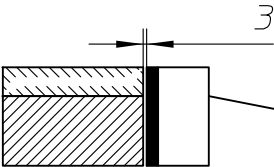
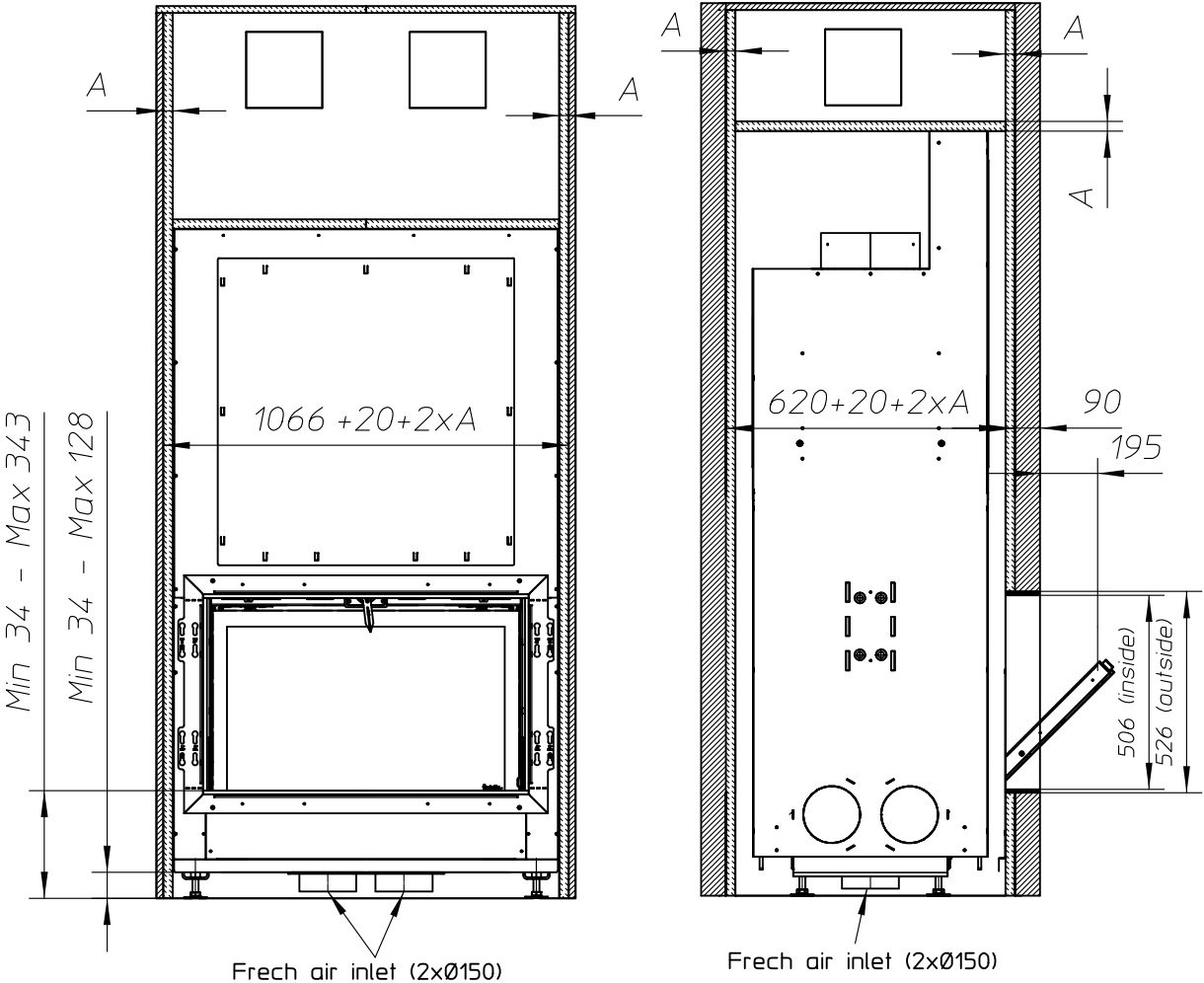
General dimensional tolerances up to 6mm  
Metalfire preserves the right to modify specifications without previous notice


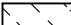
Sheet  
2/5

With finishing frame 90/10



Scale 1:30



 Combustable finishing material  
 Insulation (thickness see table)

ULTIME D Patented

*Metalfire*

Technical Document

ULTIME D MF 800-50 WHE 1S BRICK

Prescribed insulation thickness (mm)

Combustable finishing material

Metalfire recommended  
SILCA T 300  
(TC = 0,09 W/mK)

A = 25mm

Non-combustable finishing material

non-combustable  
materials  
structural building items  
EXCLUDED e.g. load bearing walls

A = 0mm

TC = thermal conductivity

NC = non-combustable

First aid and technical support:

- support@metalfire.eu

- +32 9 261 51 90

scale 1:20

www.metalfire.eu

EN 13229

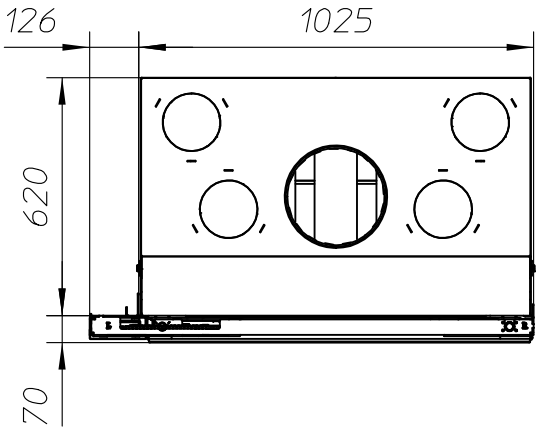
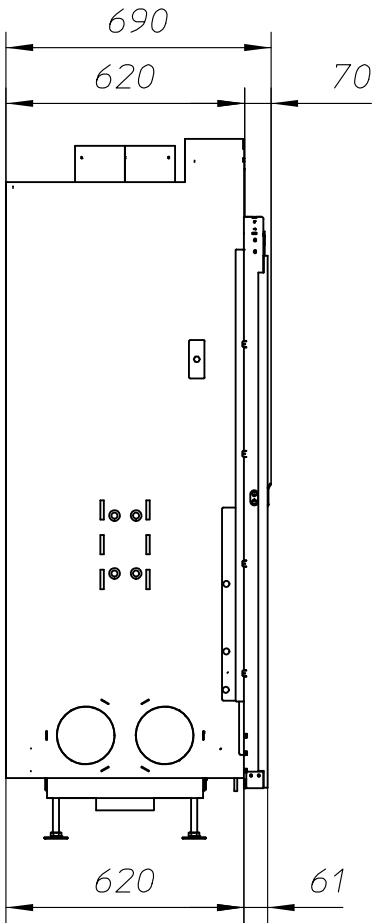
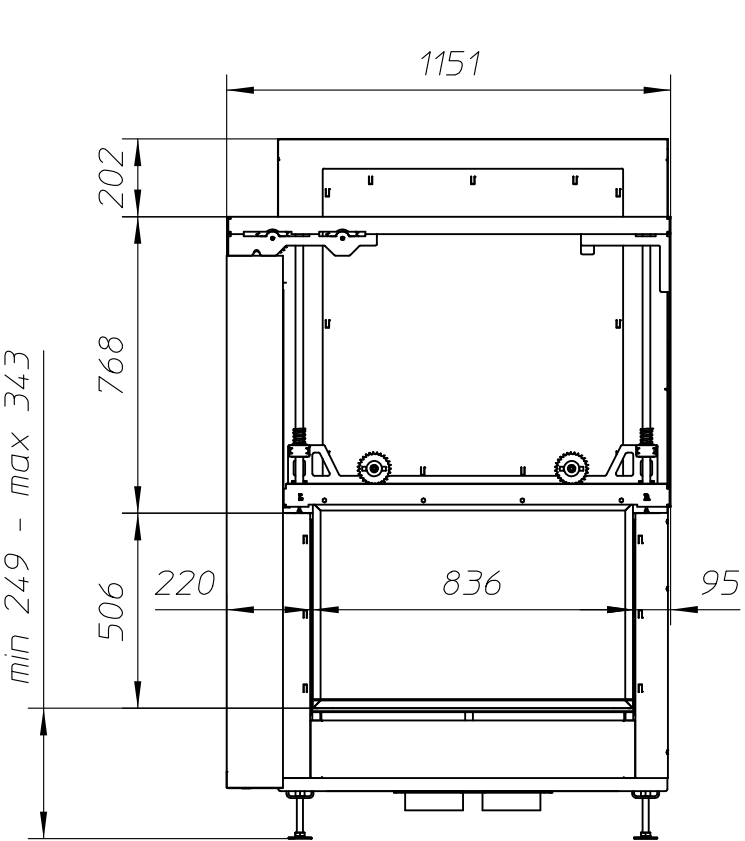
General dimensional tolerances up to 6mm  
Metalfire preserves the right to modify specifications without previous notice

Rev.  
A

CE

Sheet  
3/5

WITH FIRESCREEN - NO FINISHING FRAME



ULTIME D<sup>Patented</sup>

*Metalfire*

## Technical Document

ULTIME D MF 800-50 WHE 1S Brick

### Dimensions (mm)

- combustion opening WxH: 836 x 506
- external WxDxH: 1151 x 690 x 2069
- fresh air intake: 2 x Ø150
- flue gas outlet: Ø250

### Technical Data

- ecolabel: A
- capacity: 18.2kW
- efficiency: 82.3%
- CO (volume with 13%O<sub>2</sub>): 0.08%
- dust (volume with 13%O<sub>2</sub>): 26mg/Nm<sup>3</sup>
- weight: 350kg
- convection air inlet: min.700cm<sup>2</sup> (4 x Ø150)
- convection air outlet: min.700cm<sup>2</sup> (4 x Ø150)

First aid and technical support:

- support@metalfire.eu
- +32 9 261 51 90

scale 1:20

www.metalfire.eu EN 13229

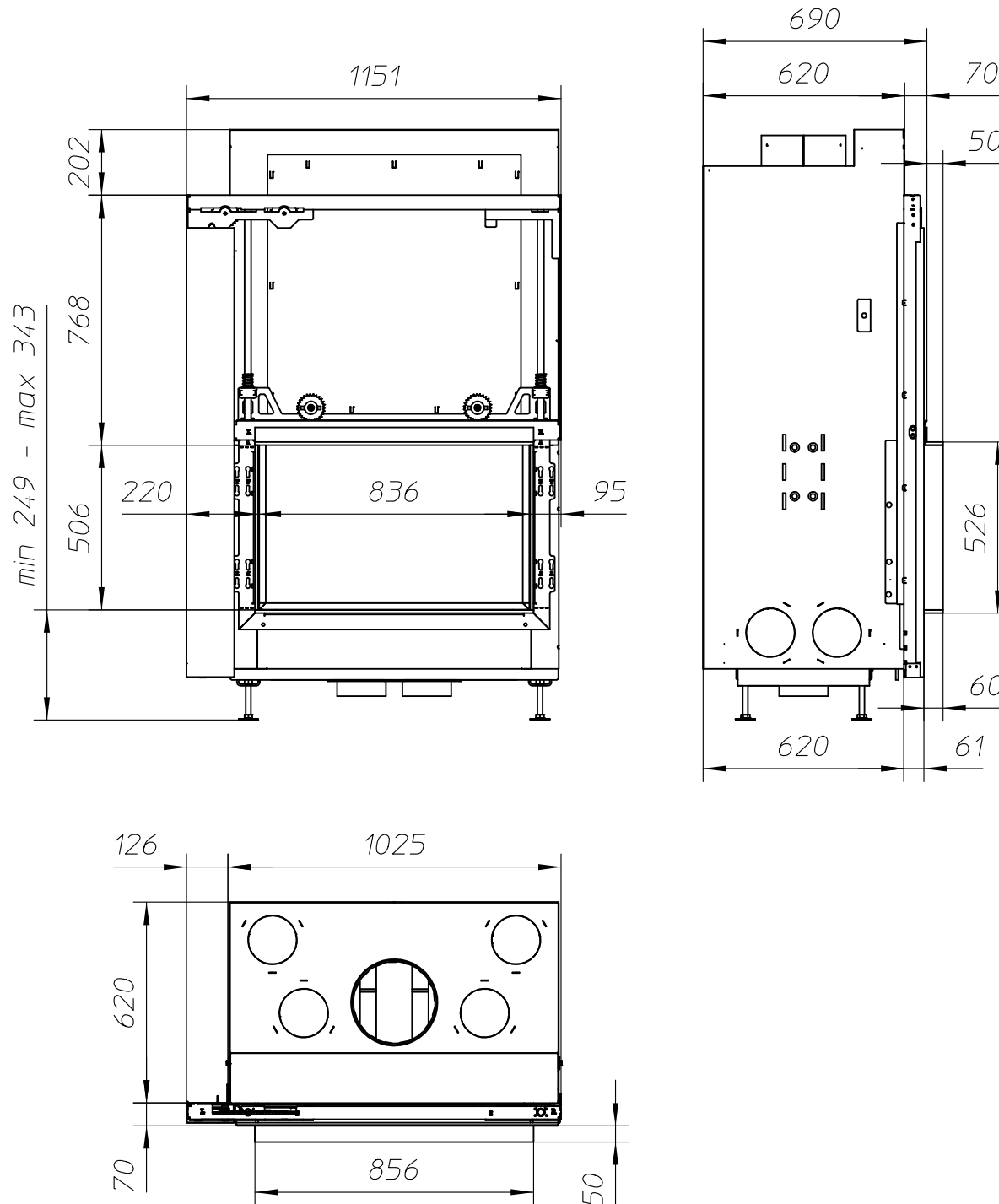
General dimensional tolerances up to 6mm  
Metalfire preserves the right to modify specifications without previous notice

Rev.  
A

CE

Sheet  
4/5

WITH FIRESCREEN AND FINISHING FRAME 120/10



ULTIME D<sup>Patented</sup>

*Metalfire*

## Technical Document

ULTIME D MF 800-50 WHE 1S Brick

### Dimensions (mm)

- combustion opening WxH: 836 x 506
- external WxDxH: 1151 x 740 x 2069
- fresh air intake: 2 x Ø150
- flue gas outlet: Ø250

### Technical Data

- ecolabel: A
- capacity: 18.2kW
- efficiency: 82.3%
- CO (volume with 13%O<sub>2</sub>): 0.08%
- dust (volume with 13%O<sub>2</sub>): 26mg/Nm<sup>3</sup>
- weight: 350kg
- convection air inlet: min.700cm<sup>2</sup> (4 x Ø150)
- convection air outlet: min.700cm<sup>2</sup> (4 x Ø150)

First aid and technical support:

- support@metalfire.eu

- +32 9 261 51 90

scale 1:20

www.metalfire.eu EN 13229

General dimensional tolerances up to 6mm  
Metalfire preserves the right to modify specifications without previous notice

Rev.  
A

CE

Sheet  
5/5